

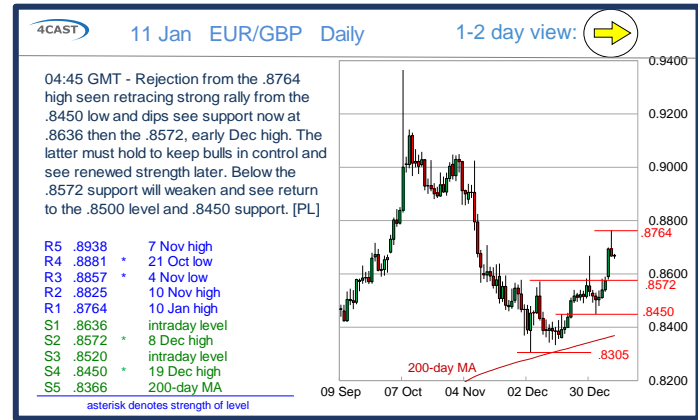
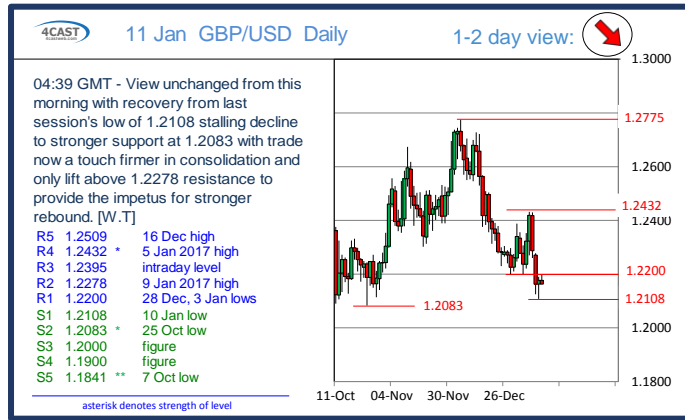
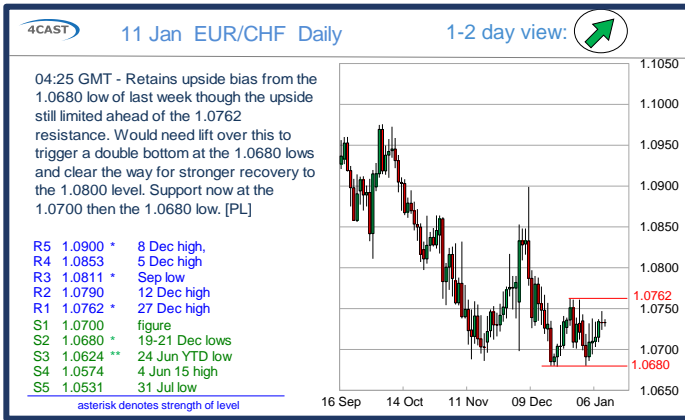
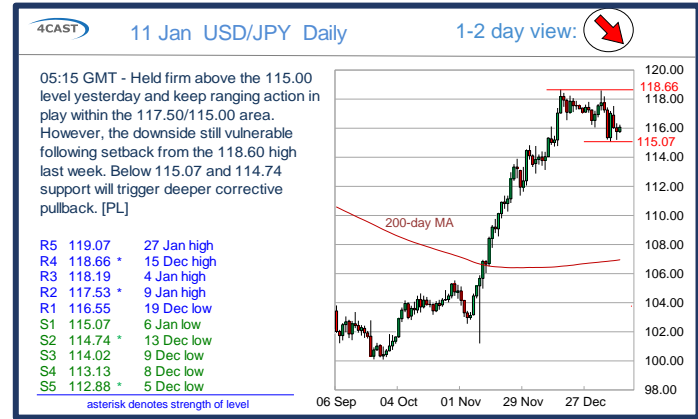
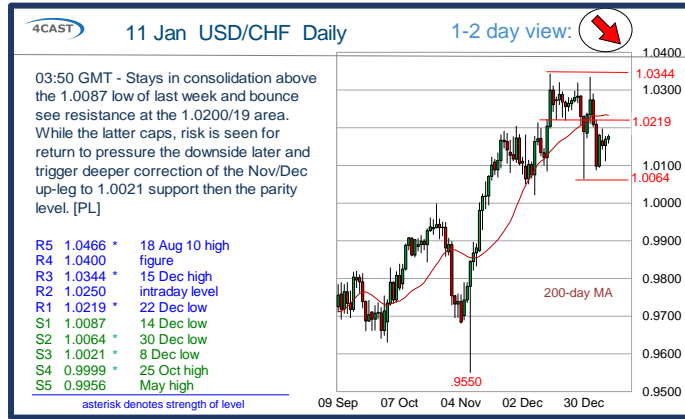
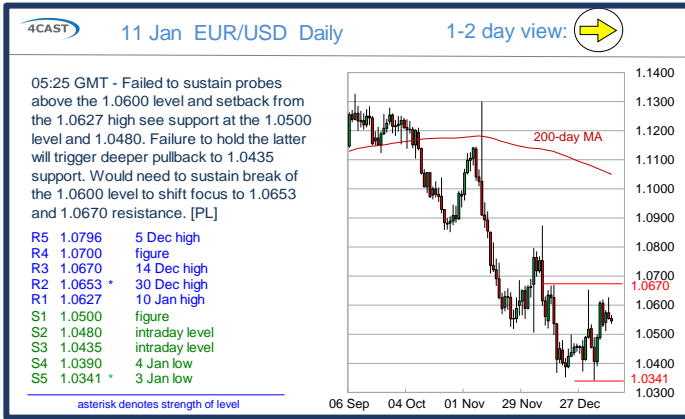
	Trends	Res 4	Res 3	Res 2	Res 1	Spot	Sup 1	Sup 2	Sup 3	Sup 4	MA20	MA50	MA200	RSI 9	
Scandies	EUR/SEK	↗	9.6767	9.6603	9.6093	9.5932	9.5838	9.5474	9.5363	9.5207	9.5128	9.6193	9.7359	9.5228	44
	EUR/NOK	↗	9.2035	9.1570	9.1195	9.0995	9.0733	9.0400	8.9765	8.9505	8.9265	9.0526	9.0509	9.2036	58
	USD/SEK	→	9.2050	9.1764	9.1124	9.0928	9.0851	9.0042	8.9908	8.9610	8.9030	9.1855	9.1655	8.6255	43
	USD/NOK	↗	8.7585	8.7000	8.6885	8.6285	8.5981	8.5465	8.5000	8.4620	8.4100	8.6415	8.5193	8.3294	50
	EUR/DKK	↘	7.4470	7.4450~	7.4405-10	7.4365	7.4337	7.4300	7.4250	7.4235	7.4225~	7.4340	7.4375	7.4401	43
	NOK/SEK	↘	1.0725	1.0650	1.0629	1.0612	1.0553	1.0515	1.0492	1.0374	1.0350	1.0605	1.0739	1.0335	39
Majors	EUR/USD	→	1.0700	1.0670	1.0653	1.0627	1.0547	1.0500	1.0480	1.0435	1.0390	1.0471	1.0621	1.1048	54
	USD/JPY	↘	118.66	118.19	117.53	116.55	116.06	115.07	114.74	114.02	113.13	117.05	113.37	106.93	47
	EUR/GBP	→	.8881	.8857	.8825	.8764	0.8672	.8636	.8572	.8520	.8450	0.8512	0.8543	0.8367	73
	GBP/USD	↘	1.2432	1.2395	1.2278	1.2200	1.2160	1.2108	1.2083	1.2000	1.1900	1.2299	1.2430	1.3237	36
	USD/CHF	↘	1.0400	1.0344	1.0250	1.0219	1.0171	1.0087	1.0064	1.0021	0.9999	1.0228	1.0111	0.9843	47
	EUR/JPY	→	124.65	124.10	123.86	123.20	122.38	122.02	121.60	120.92	120.16	122.60	120.36	118.05	50
	EUR/CHF	↗	1.0853	1.0811	1.0790	1.0762	1.0731	1.0700	1.0680	1.0624	1.0574	1.0716	1.0740	1.0873	54
	AUD/USD	↗	.7502	.7476	.7431	.7395	0.7371	.7311	.7280	.7246	.7200	0.7258	0.7401	0.7498	64
	USD/CAD	↘	1.3598	1.3478	1.3384	1.3268	1.3246	1.3194	1.3174	1.3153	1.3098	1.3387	1.3380	1.3098	36
	NZD/USD	→	.7124	.7105	.7083	.7048	0.6986	.6949	.6926	.6885	.6862	0.6944	0.7061	0.7080	52
	EUR/CAD	↘	1.4390	1.4355	1.4220	1.4080	1.3973	1.3820	1.3700	1.3510	1.34~	1.4021	1.4214	1.4467	44
	GBP/JPY	↘	143.86	142.50	142.18	141.45	141.1200	140.18	139.98	138.52	137.28	143.9375	140.8886	141.5014	34
EM	USD/CNH	↗	6.9895	6.9693	6.9417	6.9220	6.8994	6.8678	6.8370	6.8090	6.7826	6.9266	6.8994	6.7001	48
	USD/ZAR	→	14.2935	14.1745	14.0895	13.9515	13.7658	13.4485	13.1600	13.0000	12.8135	13.8453	13.8766	14.2784	50
	USD/BRL	↘	3.3380	3.3300	3.2760	3.2400	3.1950	3.1860	3.1750	3.1610	3.1010	3.2737	3.3284	3.3351	30
	USD/MXN	↗	22.500	22.000	21.900	21.847	21.815	21.390	21.092	20.870	20.500	20.896	20.509	19.024	81
	EUR/PLN	↘	4.4720	4.4600	4.4275	4.3900	4.3668	4.3560	4.3445	4.3190	4.2925	4.3937	4.4074	4.3625	38
	EUR/CZK	→	27.285	27.225	27.111	27.04~	27.006	26.96~	26.950	26.940	26.915	27.010	27.016	27.018	45
	EUR/HUF	→	315.05	314.35	312.60	311.65	308.80	306.70	306.00	304.50	305.20	309.35	309.94	310.77	47
	EUR/TRY	↗	4.2000	4.1500	4.1288	4.1108	4.0857	3.9000	3.8320	3.7425	3.6850	3.7460	3.6633	3.3963	94
	USD/PLN	↘	4.2798	4.2426	4.1860	4.1467	4.1381	4.1000	4.0121	3.9858	3.9497	4.1975	4.1518	3.9523	39
	USD/RUB	↗	65.50	64.50~	63.50~	62.50	60.11	59.63	59.11	58.35	57.60	60.76	62.67	64.17	40
Other Markets	S&P 500 Futures	→	2300	2290	2277	2273	2261	2258	2250	2228	2204	2258	2207	2127	56
	DAX Futures	↗	12000	11950	11673	11649	11585	11500	11000	10826	10400	11475	10991	10416	75
	US 10y Futures	↗	126-16	126-00	125-08	124-29	124.22	124-10+	124-00	122-14+	122-07	129.84	129.68	128.70	48
	Bund Futures	↘	165.26	164.65	164.09	163.67	163.12	162.04	161.17	160.80	158.98	162.77	162.90	164.62	36
	WTI Oil Futures	↘	58.52	55.44	54.32	53.26	50.96	50.15	50.00	49.13	45.74	52.61	49.41	46.73	39

	Trends	Res 4	Res 3	Res 2	Res 1	Spot	Sup 1	Sup 2	Sup 3	Sup 4	MA20	MA 50	MA 200	RSI 9	
Scandies	EUR/SEK	↗	9.6767 9 Dec low	9.6603 27 Dec high	9.6093 26 Dec low	9.5932 29 Dec high	9.5838	9.5474 10 Jan low	9.5363 6 Jan 17 low	9.5207 5 Jan 17 low	9.5128 4 Jan 17 low	9.6193	9.7359	9.5228	44
	EUR/NOK	↗	9.2035 200-day MA	9.1570 11 Nov high	9.1195 23 Dec high	9.0995 30 Dec high	9.0733	9.0400 9 Jan high	8.9765 6 Jan low	8.9505 14 Dec low	8.9265 12 Dec low	9.0526	9.0509	9.2036	58
	USD/SEK	→	9.2050 3 Jan 17 high	9.1764 4 Jan 17 high	9.1124 5 Jan 17 high	9.0928 9 Jan 17 high	9.0851	9.0042 10 Jan low	8.9908 5 Jan 17 low	8.9610 25 Oct high	8.9030 9 Nov low	9.1855	9.1655	8.6255	43
	USD/NOK	↗	8.7585 28 Dec high	8.7000 figure	8.6885 3 Jan high	8.6285 3 Jan low	8.5981	8.5465 intraday level	8.5000 figure	8.4620 6 Jan low	8.4100 14 Dec low	8.6415	8.5193	8.3294	50
	EUR/DKK	↘	7.4470 19-Oct high	7.4450~ 1year MA	.4405-10 early Dec highs	7.4365 2-Jan high	7.4337	7.4300 figure	7.4250 24-Jun accel	7.4235 Jun YTD low	7.4225~ Apr-Jun-03 lows	7.4340	7.4375	7.4401	43
	NOK/SEK	↘	1.0725 27 Oct low	1.0650 6 Jan 2017 high	1.0629 9 Jan high	1.0612 10 Jan high	1.0553	1.0515 10 Jan low	1.0492 29 Dec low	1.0374 6,7 Sep highs	1.0350 22 Sep low	1.0605	1.0739	1.0335	39
Majors	EUR/USD	→	1.0700 figure	1.0670 14 Dec high	1.0653 30 Dec high	1.0627 10 Jan high	1.0547	1.0500 figure	1.0480 intraday level	1.0435 intraday level	1.0390 4 Jan low	1.0471	1.0621	1.1048	54
	USD/JPY	↘	118.66 15 Dec high	118.19 4 Jan high	117.53 9 Jan high	116.55 19 Dec low	116.06	115.07 6 Jan low	114.74 13 Dec low	114.02 9 Dec low	113.13 8 Dec low	117.05	113.37	106.93	47
	EUR/GBP	→	.8881 21 Oct low	.8857 4 Nov low	.8825 10 Nov high	.8764 10 Jan high	0.8672	.8636 intraday level	.8572 8 Dec high	.8520 intraday level	.8450 19 Dec high	0.8512	0.8543	0.8367	73
	GBP/USD	↘	1.2432 5 Jan 2017 high	1.2395 intraday level	1.2278 9 Jan 2017 high	1.2200 28 Dec, 3 Jan low	1.2160	1.2108 10 Jan low	1.2083 25 Oct low	1.2000 figure	1.1900 figure	1.2299	1.2430	1.3237	36
	USD/CHF	↘	1.0400 figure	1.0344 15 Dec high	1.0250 intraday level	1.0219 22 Dec low	1.0171	1.0087 14 Dec low	1.0064 30 Dec low	1.0021 8 Dec low	0.9999 25 Oct high	1.0228	1.0111	0.9843	47
	EUR/JPY	→	124.65 12 May high	124.10 15 Dec high	123.86 30 Dec high	123.20 intraday level	122.38	122.02 5 Jan low	121.60 29 Dec low	120.92 8 Dec low	120.16 25 Nov high	122.60	120.36	118.05	50
	EUR/CHF	↗	1.0853 5 Dec high	1.0811 Sep low	1.0790 12 Dec high	1.0762 27 Dec high	1.0731	1.0700 figure	1.0680 19-21 Dec lows	1.0624 24 Jun YTD low	1.0574 4 Jun 15 high	1.0716	1.0740	1.0873	54
	AUD/USD	↗	.7502 200-day MA	.7476 13 Dec low	.7431 15 Dec high	.7395 14 Dec low	0.7371	.7311 21 Nov low	.7280 intraday level	.7246 30 Dec high	.7200 figure	0.7258	0.7401	0.7498	64
	USD/CAD	↘	1.3598 28 Dec high	1.3478 29 Dec low	1.3384 50-day MA	1.3268 100-day MA	1.3246	1.3194 09 Jan low	1.3174 06 Jan low	1.3153 lower TL	1.3098 200-day MA	1.3387	1.3380	1.3098	36
	NZD/USD	→	.7124 15 Dec high	.7105 14 Dec low	.7083 200-day MA	.7048 10 Jan high	0.6986	.6949 9 Jan low	.6926 26 Dec high	.6885 3 Jan low	.6862 23 Dec low	0.6944	0.7061	0.7080	52
	EUR/CAD	↘	1.4390 28-Nov high	1.4355 8-Dec high	1.4220 28-Dec high	1.4080 3-Jan high	1.3973	1.3820 12-Dec low	1.3700 figure	1.3510 Jun-15 low	1.34~ May-15 lows	1.4021	1.4214	1.4467	44
GBP/JPY	↘	143.86 9 Jan 2017 high	142.50 5 Jan 2017 low	142.18 29 Dec low	141.45 10 Jan high	141.12	140.18 10 Jan low	139.98 30 Nov low	138.52 29 Nov low	137.28 23 Nov low	143.94	140.89	141.50	34	
EM	USD/CNH	↗	6.9895 2 Jan 2017 high	6.9693 4 Jan 2017 high	6.9417 26 Dec low	6.9220 21 Dec low	6.8994	6.8678 10 Jan low	6.8370 9 Jan 2017 low	6.8090 intraday level	6.7826 5 Jan 2017 low	6.9266	6.8994	6.7001	48
	USD/ZAR	→	14.2935 23-Nov high	14.1745 15-Dec high	14.0895 22-Dec high	13.9515 28-Dec high	13.766	13.4485 8-Dec low	13.1600 8-Nov low	13.0000 figure	12.8135 19-Aug 15 low	13.845	13.877	14.278	50
	USD/BRL	↘	3.3380 200-day MA	3.3300 50-day MA	3.2760 100-day MA	3.2400 29 Dec low	3.1950	3.1860 06 Jan low	3.1750 projection	3.1610 08 Nov low	3.1010 25 Oct low	3.2737	3.3284	3.3351	30
	USD/MXN	↗	22.500 congestion	22.000 figure	21.900 projection	21.847 intraday level	21.815	21.390 break level	21.092 14 Nov high	20.870 01 Dec high	20.500 break level	20.896	20.509	19.024	81
	EUR/PLN	↘	4.4720 8-Dec high	4.4600 fr 9-Dec highs	4.4275 30-Dec high	4.3900 28-Dec low	4.3668	4.3560 9-Jan low	4.3445 27-Oct high	4.3190 9-Nov low	4.2925 1-Nov low	4.3937	4.4074	4.3625	38
	EUR/CZK	→	27.285 Sep-15 high	27.225 24-Jun high	27.111 11-Nov high	27.04~ 1year MA	27.006	26.96~ fr July lows	26.950 5-Sep low	26.940 May lows	26.915 8-Nov-13 low	27.010	27.016	27.018	45
	EUR/HUF	→	315.05 14-Dec high	314.35 15-Dec high	312.60 19-Dec high	311.65 30-Dec high	308.80	306.70 6-Jan low	306.00 figure	304.50 9-Nov low	305.20 17-Oct low	309.35	309.94	310.77	47
	EUR/TRY	↗	4.2000 figure	4.1500 ABC	4.1288 projection	4.1108 intraday level	4.0857	3.9000 figure	3.8320 9-Jan open	3.7425 5-Jan low	3.6850 30-Dec low	3.7460	3.6633	3.3963	94
	USD/PLN	↘	4.2798 15 Dec high	4.2426 03 Jan high	4.1860 break level	4.1467 50-day MA	4.1381	4.1000 break level	4.0121 100-day MA	3.9858 24 Oct high	3.9497 200-day MA	4.1975	4.1518	3.9523	39
USD/RUB	↗	65.50 29th Nov high	64.50~ mid-Sep apex	63.50~ end-Nov lows	62.50 16-Dec high	60.11	59.63 9 Jan low	59.11 6 Jan low	58.35 end-Jul-15 low	57.60 22-Jul-15 high	60.76	62.67	64.17	40	
Other Markets	S&P 500 Futures	→	2300 figure	2290 projection	2277 06 Jan high	2273 13 Dec high	2261	2258 06 Jan low	2250 break level	2228 30 Dec low	2204 50-day MA	2258	2207	2127	56
	DAX Futures	↗	12000 figure	11950 break level	11673 Aug '15 high	11649 03 Jan high	11585	11500 break level	11000 figure	10826 25 Oct high	10400 break level	11475	10991	10416	75
	US 10y Futures	↗	126-16 14 Nov high	126-00 break level	125-08 50-day MA	124-29 intraday high	124.22	124-10+ break level	124-00 lower TL	122-14+ 15 Dec low	122-07 Sep '13 low	129.84	129.68	128.70	48
	Bund Futures	↘	165.26 9-Nov high	164.65 29-Dec high	164.09 30-Dec low	163.67 6-Jan high	163.12	162.04 19-Dec low	161.17 15-Dec low	160.80 12-Dec low	158.98 Channel btm	162.77	162.90	164.62	36
	WTI Oil Futures	↘	58.52 Mar '15 low	55.44 12 Dec high	54.32 12 Dec high	53.26 10 Oct high	50.96	50.15 50-day MA	50.00 22 Nov high	49.13 25 Nov high	45.74 29 Nov low	52.61	49.41	46.73	39

Danske Technical Update

Published - 11 January 2017 05:44

Powered by **4CAST**
4castweb.com



Strong uptrend Weak uptrend or higher in range Sideways or in range Weak downtrend or lower in range Strong downtrend

Copyright and other intellectual property rights in the material in this document belong to 4CAST Limited and/or 4CAST Inc (4CAST). The material shall not, under any circumstances, be reproduced or distributed in whole or part without the prior written consent of 4CAST. The material in this document is based upon information which 4CAST considers to be reliable and the analysis and opinion in the material represents the view of 4CAST at the time of transmission (unless stated otherwise). Such analysis and opinion is subject to change without notice. The material is intended for use by parties knowledgeable and experienced in the financial sector and is only one source amongst others to be considered in carrying on their business or activity. ACCORDINGLY 4CAST MAKES NO REPRESENTATION OR WARRANTY EXPRESS OR IMPLIED STATUTORY OR OTHERWISE (INCLUDING BUT NOT LIMITED TO) THE ACCURACY OF THE MATERIAL IN THIS DOCUMENT OR THE FITNESS FOR PURPOSE AND ALL SUCH REPRESENTATIONS AND WARRANTIES ARE HEREBY EXPRESSLY EXCLUDED. 4CAST does not give or purport to give investment advice. Any action taken by users on the basis of material in this document is entirely at their own risk. Independent investment advice should be sought where appropriate. 4CAST website may link to or be linked to other Internet sites. 4CAST does not accept responsibility for the content of such other sites. 4CAST's terms and conditions of business apply to all fee-paying subscribers and trial users.



NOK, SEK Opening Updates

	Resistance	Support	
EUR/NOK	9.2035	9.0400	Rally above 9.0400 and 9.0625 resistance clears the way for retest of the 9.1000 level then 9.1195, Dec high. Beyond this will trigger stronger recovery to 9.1570 then the 9.2000 level. Support now at 9.0400. [P.L]
	9.1570	8.9765	
	9.1195	8.9505	
	9.0995	8.9265	
EUR/SEK	9.6767	9.5474	Corrective bounce is now threatening the congestion high at 9.5932 and need a sustained lift to boost rebound towards 9.6093 then higher 9.6603. Only dip below 9.5474 support to fade current recovery. [W.T]
	9.6603	9.5363	
	9.6093	9.5207	
	9.5932	9.5128	
USD/NOK	8.7585	8.5465	Held firm above the 8.5000 level and bounce from 8.5055 low to regain the 8.6000 level clears the way for retest of the 8.6285 then 8.6885 resistance. Downside see support now at 8.5465 then the 8.5000 level. [P.L]
	8.7000	8.5000	
	8.6885	8.4620	
	8.6285	8.4100	
USD/SEK	9.2050	9.0042	Trade from the beginning of this week a touch choppy in consolidation and only lift above 9.1124 resistance will boost rebound towards next target at 9.2050. On the downside, bears will have to take out 8.9908 support to regain footing. [W.T]
	9.1764	8.9908	
	9.1124	8.9610	
	9.0928	8.9030	



Strong uptrend
 Weak uptrend or higher in range
 Sideways or in range
 Weak downtrend or lower in range
 Strong downtrend